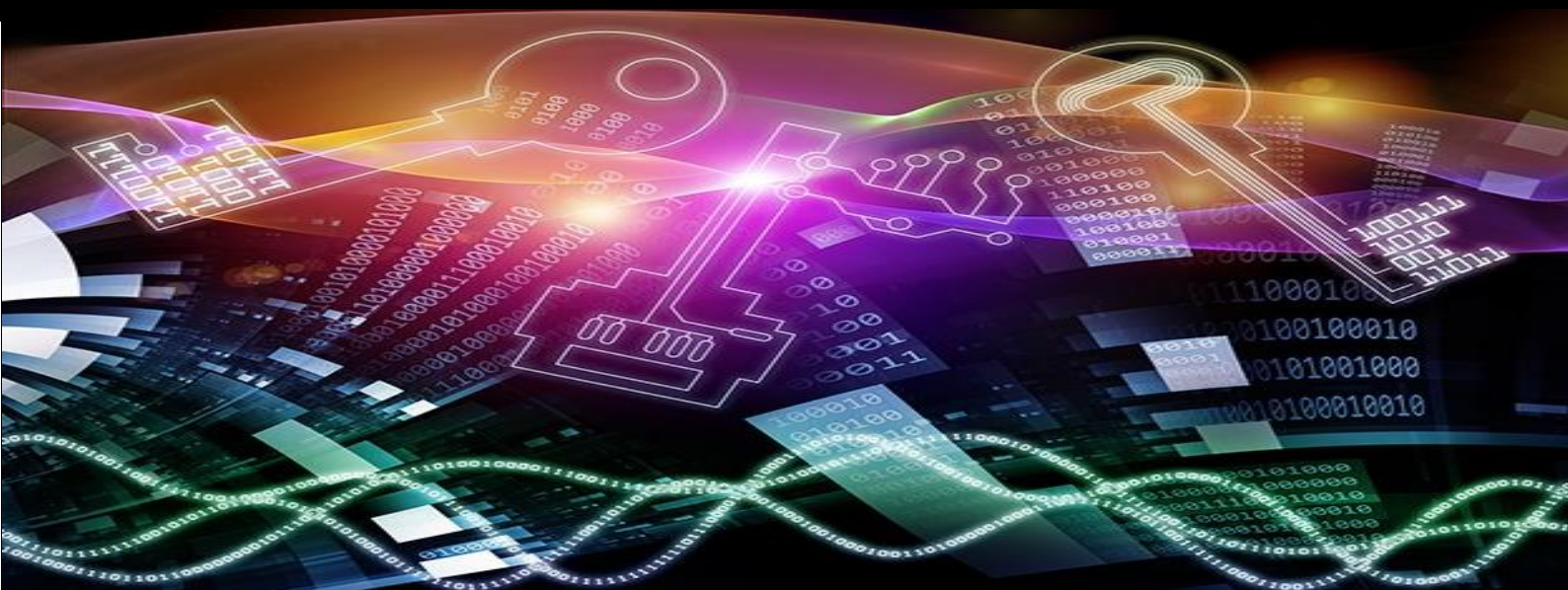




Electrical Engineering
Systems Engineering
Digital Engineering

Systems Engineering

Design Manufacture Installation



Our Company

- We are an SME with great depth of knowledge and expertise
- We understand collaboration/partnering and the benefits it brings to all parties
- We are an ideal candidate for a major contractor/engineering company to leverage specialist services to augment their in-house capability
- We provide excellent value, based on extensive know-how and engineering capability
- We have world class engineering methods and systems
- We have a complete suite of up to date insurances and accreditations: ○ Public and Products Liability Insurance \$20m ○ Professional Indemnity Insurance \$20m ○ Motor Vehicle Insurance ○ Worker's Compensation Insurance ○ Marine and Transport Insurance ○ ISO9001 QA Accreditation ○ ISO45001 WHS Accreditation ○ ISO14001 Environmental Accreditation
- We maintain a highly secure, cloud-based company information management system with Sharepoint, JIRA, Confluence and web based integration for our staff and our clients
- We have never failed to complete a project commitment for any client and have never left a job site before fulfilling our obligations
- Our culture is customer centric and our work ethic is strong and consistent
- We are a Digitally Transformed business and a Digital Engineering practitioner



- *We are self-funded and debt free*
- *Itech Corporation is a specialist electrical and systems engineering company, operating on the eastern seaboard of Australia for over 25 years. In essence, we are a boutique engineering company but with skills to match our larger competitors.*
- *All of our people are experienced, qualified and certified for the work we assign them.*
- *We have a strong history of success in the engineering and execution of process control, automation and SCADA systems in manufacturing industry, and in particular Food.*
- *We have implemented many large scale BMS and process control SCADA systems including modern Cloud based Systems.*
- *We have provided engineering services to Hospitals and we are an accredited NSW Health contractor.*
- *We have a highly skilled and well credentialed, tertiary qualified engineering team with over 150 man years of experience.*

Our Highlights

Over the course of 30 years we have recorded and earned many achievements and cite the following highlights:

- We have won awards for our engineering and software development skills, including 2 Zenith Awards and a Consensus Award for the in-house developed iView real time manufacturing productivity management system.
- In 2020, we completed the complex upgrade of the automated, refrigerated warehouse, management system for Suprima Foods, including the upgrade of the real time control systems and motor drives, the control software and the warehouse management and tracking system at a project value of over \$750K
- In 2019 we completed a major project for McCain Foods at their Lisarow site involving the upgrade of their main manufacturing lines, including the development of the control software and the SCADA software upgrade at a project value of \$1.25m
- In 2020 we delivered a large SCADA system for the Northern Intercity Fleet Maintenance Facility involving the integration of all of the disparate subsystems on site and provision of management and maintenance support information in real time. Project Value for the SCADA system for the NIFMF project was over \$1m.
- Over the course of 10 years of project works we developed a control and SCADA system for compressed air systems used in Rail Signalling control by Sydney Trains which was recently assigned type approval by Transport for NSW as the 'Itech Compressor Control System'
- We built the first 'Ground Based Warning System' for Sydney Trains and successfully tendered the next major Ground Based Warning System implementation for the Northern Intercity Fleet Maintenance Facility at Kangy Angy on the NSW Central Coast
- We have TUV Certified Safety Engineers on staff
- We have 2 chartered electrical engineers on staff
- We have a high competency level in the design and engineering of SCADA systems across the industry segments that we serve with particular skills in PCVue SCADA for Rail Applications, Schneider Citect and ClearSCADA for water infrastructure and Rockwell Factory Suite for manufacturing
- We developed and have deployed a blending application for the Rockwell PLC and SCADA platform

Systems Engineering Services

- Project Management
- Functional Safety Systems Design and Certification
- Systems Integration
 - Rockwell
 - Siemens
 - Schneider
- Control Systems Design
- Control System Software Development
- Systems Documentation
- HMI design and software configuration
- SCADA system design and software configuration
 - ClearSCADA
 - RSView
 - Citect
 - Wonderware
 - PCVUE32
- Batch Control Systems Design and implementation
- Manufacturing Productivity software
- Real Time Database Applications
- Cloud Based Supervisory and Control Systems Design

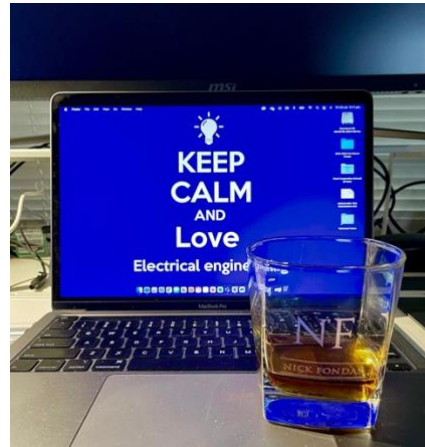
Electrical Engineering Services

- Electrical circuit design
- Cable sizing and Protection design
- Cable Schedules
- AutoCAD drawings and documentation
- Bill of Materials
- Purchasing
- Control Cabinet Design and Manufacture
- Switchboard Design and Manufacture
- Cabinet layout and equipment fitting
- Cabinet wiring
- Factory Acceptance Testing
- Electrical Design Services fully integrated with Itech's Systems Engineering Team
- AC and DC Drive systems design and manufacture
- AC Servo Systems design and manufacture
- Machine Vision Inspection Systems
- LV Power distribution systems
- Solar Systems Design
- UPS
- ATS Design and Manufacture

Field Electrical Installation Services

- Site installation services
- Site Services Supervision
- I&C Wiring
- Power Cabling
- Cable Containment
- Documentation
- Instrumentation Installation
- Telemetry Systems Installation
- Fibre Optic Network Installation
- Electrical maintenance contract services for ongoing client support
- Site equipment troubleshooting and service
- Site Commissioning
- Site Installation
- Accredited Site management systems for Environmental, Quality and Safety
- Risk Assessment and Safe Work Methodology

ENGINEERING DESIGN, MANUFACTURING, INSTALLATION

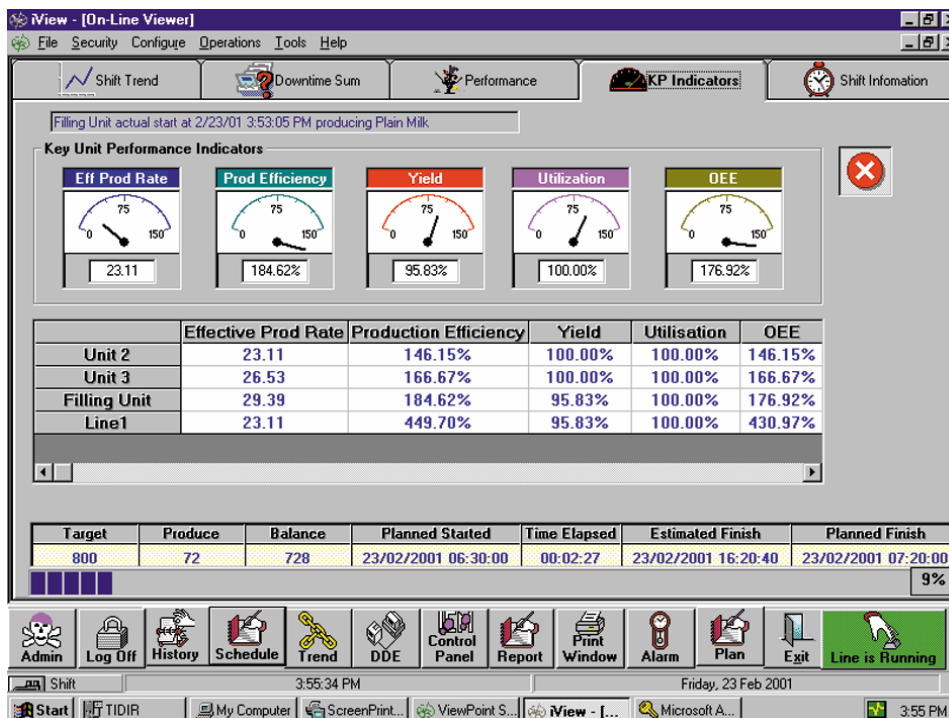


BMS, SCADA, Data Analytics and Engineering Design Experience

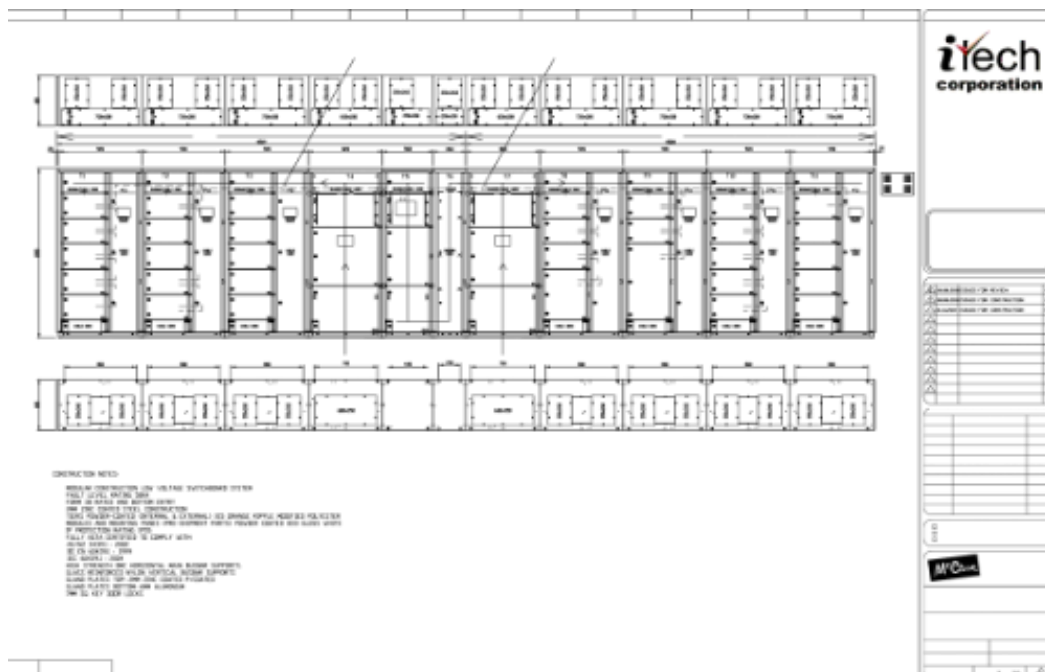
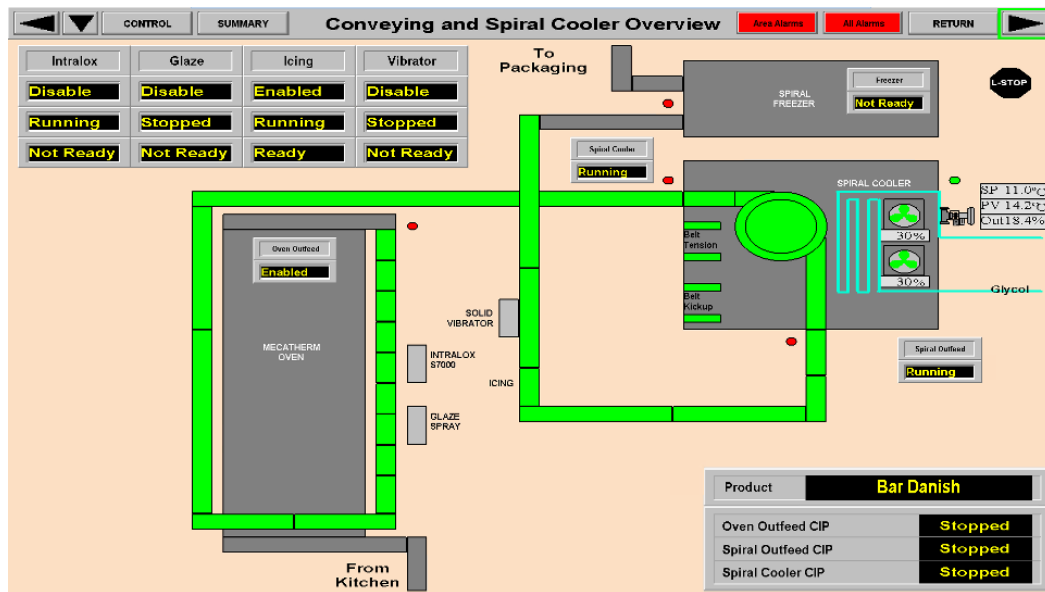
- Designed, Engineered, manufactured, installed and commissioned the control system and the SCADA system for a new Oil Blending plant for Nulon, including the development and deployment of the Itech Blending software which is being used by the client to implement their formulations. Total project value \$450K.



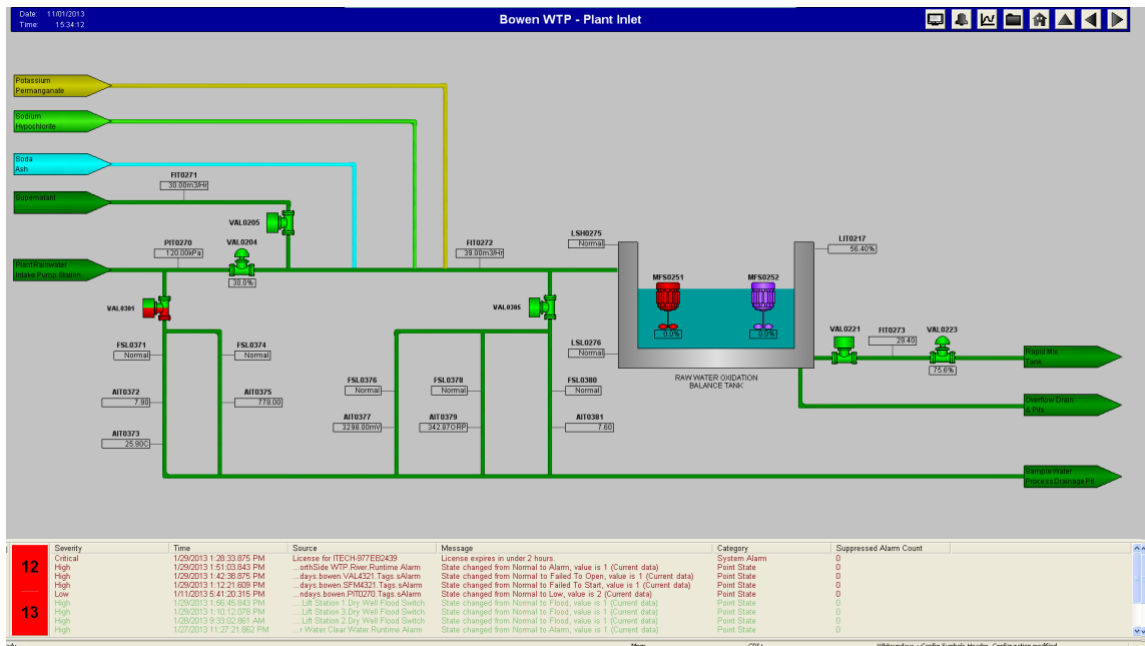
- Designed, Engineered, manufactured, installed and commissioned several BMS systems for UBS working in conjunction with Johnson Controls. We pioneered the implementation of conventional SCADA technology with traditional BMS control devices and networks.
- Designed a Suite of on-line and off-line manufacturing productivity management and reporting tools under the family name of iView. The software was deployed in several major manufacturing operations both in Australia and internationally. Itech Corporation won a Consensus award for iView.



- Designed, engineered and commissioned a sophisticated BMS system based on the PCS-7 System from Siemens for a CSIRO facility.
- New installation and upgrade of the main manufacturing lines at McCain Foods plant in Lisarow, NSW. This project involved the design and manufacture of new MCC's for the control of the new conveyor lines, design and development of the control systems software, development and integration of 3rd party machinery into the new system, upgrade and development of the site SCADA system, installation of all electrical systems, design, manufacture and installation of new Main Switchboards, commissioning and handover. There were many challenges on this project and the Itech Engineering and all of the problem-solving skills of Itech personnel were needed to get the successful outcome. The total project value was \$1.25m.



- Designed and deployed a performance metrics and analytics tool called Preview which was purpose designed for the use by productivity and efficiency consultants both in Australia and internationally.
- Designed and built 2 large SCADA systems for the Whitsundays Regional Council which were deployed simultaneously. This was close to a \$1m software and commissioning project for Itech. We subsequently have been providing engineering consulting services for the council under a contract which we deploy remotely from our engineering offices in Sydney.



- Itech were engaged in 2020 by BHP to provide design and consultancy services for a remote area SCADA system to integrate the real time information and assess the performance information across 14 mine sites distributed throughout Queensland from a central site in Brisbane.
- Itech Corporation is a Health NSW contractor and has executed electrical engineering works and electrical engineering design for hospital applications.
- Itech designed and engineered a factory wide automation and control system for the Nexus battery recycling plant in Perth in WA.
- Itech designed the automation and visualisation for the new Civilcast manufacturing facility in Cowra in NSW.

