



Electrical Engineering
Systems Engineering
Digital Engineering

Water Industry

Design Manufacture Installation





Introduction

Itech Corporation is a specialist electrical and systems engineering company, operating on the eastern seaboard of Australia for over 25 years.

In essence, we are a boutique engineering company but with skills to match our larger competitors.

All of our people are experienced, qualified and certified for their work.

We specialize in water and wastewater electrical engineering and control systems, specialized systems in Rail and Rail Infrastructure.

We have a strong history of success in the engineering and execution of process control, automation and SCADA systems in manufacturing industry, and in particular Food.

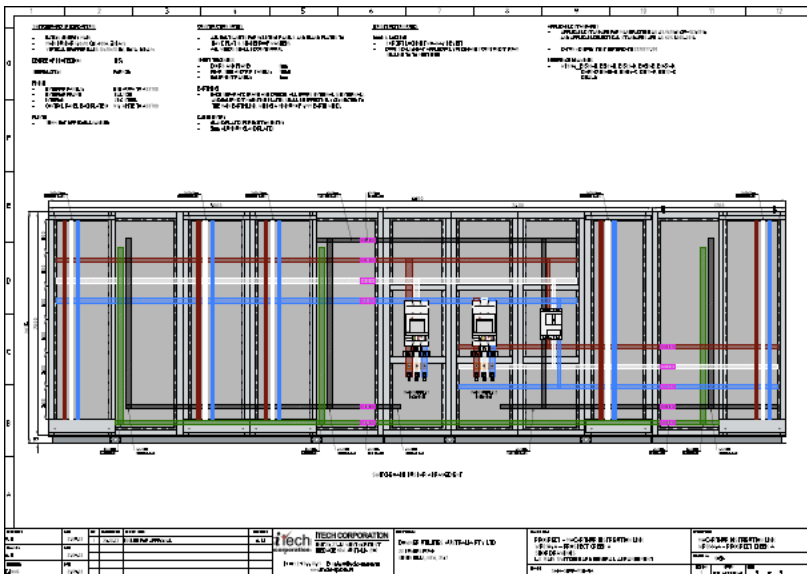
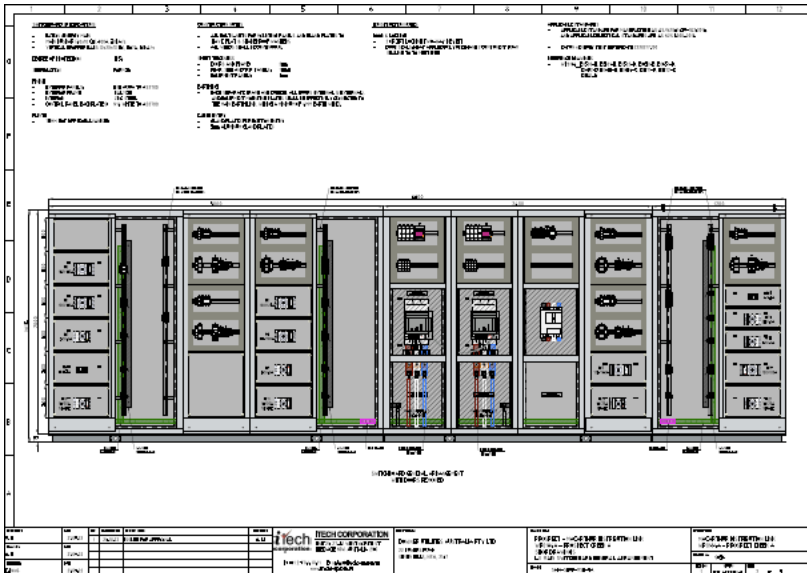
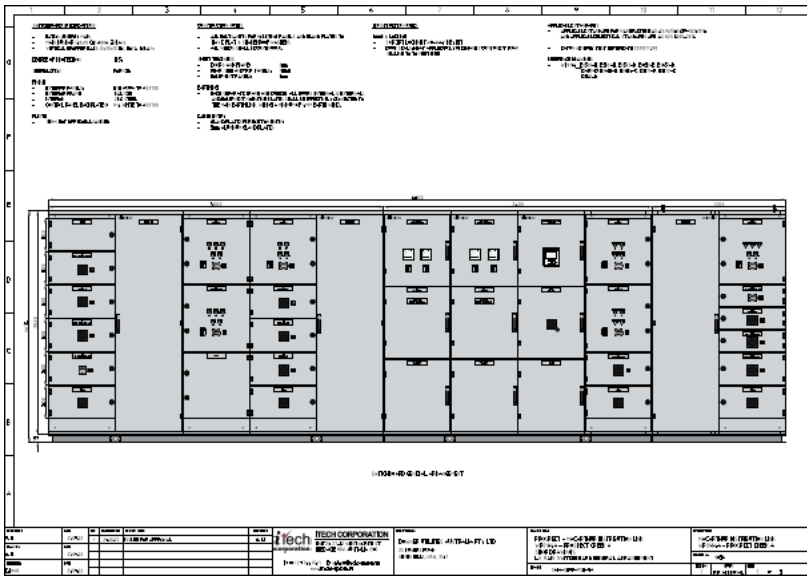
We combine our expert level systems engineering and design skills with our electrical design, manufacturing and installation skills to offer vertically integrated engineering services for project scopes up to \$5m.

Our Company

- We are an Australian SME with great depth of knowledge and expertise We provide
- excellent value, based on extensive know-how and engineering capability
- We have world class engineering methods and systems We have
- a complete suite of up to date insurances:
 - Public and Products Liability Insurance \$20m
 - Professional Indemnity Insurance \$20m
 - Motor Vehicle Insurance
 - Worker's Compensation Insurance
 - Marine and Transport Insurance
 - We are an ISO accredited organisation
- ISO9001:2015 QMS Accreditation
 - ISO4801:2018 OHSMS Accreditation
 - ISO14001:2015 EMS Accreditation
 - We are a Digitally Transformed company and maintain a highly secure, cloudbased
- company information management system with Sharepoint, iAuditor, JIRA, Confluence and cloud accounting systems integration
- We have never failed to complete a project commitment for any client and have never left a job site before fulfilling our obligations
- Our culture is customer centric and our work ethic is strong and consistent

Systems Engineering Services	Electrical Engineering Services	Field Electrical Installation Services
<ul style="list-style-type: none"> • Project Management • Functional Safety • Systems Design and Certification • Systems Integration <ul style="list-style-type: none"> ○ Rockwell ○ Siemens ○ Schneider • Control Systems Design • Control System Software Development • Systems Documentation • Digital Engineering • SCADA system design and software configuration <ul style="list-style-type: none"> ○ ClearSCADA ○ RSView ○ Citect ○ Wonderware ○ PCVUE32 • Batch Control Systems Design and implementation • Manufacturing Productivity software • Real Time Database Applications • Cloud Based Supervisory and Control Systems Design 	<ul style="list-style-type: none"> • Electrical circuit design • Cable sizing and Protection design • Cable Schedules • AutoCAD drawings and documentation • Bill of Materials • Purchasing • Control Cabinet Design and Manufacture • Switchboard Design and Manufacture • Cabinet layout and equipment fitting • Cabinet wiring • Factory Acceptance • Testing • Electrical Design • Services fully integrated with Itech's Systems Engineering Team • AC and DC Drive systems design and manufacture • AC Servo Systems design and manufacture • Machine Vision • Inspection Systems • LV Power distribution systems • Solar Systems Design • UPS • ATS Design and Manufacture 	<ul style="list-style-type: none"> • Site installation services • Site Services Supervision • Accreditations <ul style="list-style-type: none"> ○ ISO4801:2018 WHS ○ ISO9001:2018 QA ○ ISO 14001:2015 WHS • I&C Wiring • Power Cabling • Cable Containment • Documentation • Instrumentation Installation • Telemetry Systems Installation • Fibre Optic Network Installation • Electrical maintenance contract services for ongoing client support • Site equipment troubleshooting and service • Site Commissioning • Site Installation • Accredited Site management systems for Environmental, Quality and Safety • Risk Assessment and Safe Work Methodology • IoT Installation • Services

ENGINEERING DESIGN MANUFACTURING INSTALLATION



Water/Wastewater Systems Applications

Whitsundays Regional Council



New water treatment plant control and SCADA projects, please note that these two projects were done simultaneously by the Itech engineering team, design, development and commissioning:

- Bowen WTP, MF, RO, Chemical Dosing, Alarms, Reports, Comms
- Diagnostics, Energy Utilisation, Trends, Siemens S7, ClearSCADA
- Proserpine WTP, MF, RO, Chemical Dosing, Alarms, Reports, Comms
- Diagnostics, Energy Utilisation, Trends, Siemens S7, ClearSCADA

Goulburn Regional Council



HSP project Automation of the Goulburn Water Treatment Plant including the design and manufacture of MCC, PLC Control Panels, installation of new Redundant Fibre Optic network, installation of new field control and power wiring, design of PLC and SCADA software, development of System Functional Specification, development of PLC code for Rockwell Compact Logix, development of Citect SCADA system, installation and commissioning

- Rossi Weir Water Pumping Station HV to LV conversion and upgrade, 3 new motors, starter panels, control system, telemetry, new transformer, new outdoor switchboard in kiosk style, civil and mechanical works, Goulburn Mulwaree Council
- Bradley Street Sewerage Pumping Station electrical/mechanical upgrade and well refurbishment, new switchboard, control system, telemetry, permanent generator and loadbank, new valving and piping, civil and mechanical works and site remediation, Goulburn Mulwaree Council

Ballina Shire Council



New water distribution system Kings Court, new MCC Ballina , New MCC, drives systems, PLC and HMI, Electrical design and systems engineering design, execution, installation and commissioning Lennox head, New MCC, drives systems, PLC and HMI, Electrical design and systems engineering design, execution, installation and commission

Hawkesbury City Council



Multi-stage upgrades of their Wastewater treatment Plant

- Stage 1 STP upgrade, design of PLC and SCADA system, design of electrical systems and switchboards/MCC, installation, electrical and systems engineering, execution, commissioning
- Stage 2 Biosolids Plant, design of PLC and SCADA system and integration with the existing system, design of electrical systems and switchboards/MCC, installation, electrical and systems engineering, execution, commissioning

Blacktown City Council



Storm water harvesting system at Angus Creek 3 pump stations each with control systems, all designed and manufactured and installed by Itech Corporation. Fibre optic link between the three pump stations installed by Itech Corporation SCADA system connecting the 3-pump station and linked back to the council system design engineered and installed by Itech Corporation Including all electrical and mechanical contract works

Muswellbrook Shire Council



PLC Upgrade, design, manufacture, installation and commissioning

Pall Australia

Various water treatment plant projects including the following projects:

- West Tipton WTP, MF, RO, Chemical Dosing, Alarms, Reports, Comms Diagnostics, Energy Utilisation, Trends, Rockwell Logix, Honeywell Experion SCADA
- Origin Energy Talinga WTP, MF, RO, Chemical Dosing, Alarms, Reports, Comms Diagnostics, Energy Utilisation, Trends, Rockwell Logix, Citect
- Wetalla Water Filtration Plant, MF, UV, Chemical Dosing, Rockwell Logix
- Hokitika Water Filtration Plant, MF, UV, Chemical Dosing, Rockwell PLC/HM

Sydney Water



- Sydney Water Bondi STP - Electrical engineering consulting and design Sydney Water Blackheath Sewer Pump Station Upgrade – Electrical Design, manufacture, installation and commissioning
- Sydney Water Warrimoo Sewer Pump Station Upgrade – Electrical Design, manufacture, installation and commissioning
- Sydney Water Potts Hill Dewatering System – Electrical Design, manufacture, installation and commissioning
- Sydney Water City and Pressure Tunnels – Electrical Design and Manufacture of Switchboards
- Sydney Water West Pennant Hills WPS – Electrical Design, manufacture, installation and commissioning, Comdain
- Sydney Water Sydenham/Marrickville Dewatering Station Upgrade for
- JHG/LO’R – Electrical Design, manufacture, installation and commissioning Potts Hill WP004, turnkey project where Itech did the design, construction of the panels, installation, minor civil works and engineering documentation and drawings for the site including Electrical Drawings, P&ID’s, Civil Drawings, Sydney Water/Transfield Pymont, turnkey project where Itech manufactured the new kiosk, installed the new electrical system and assisted SWC IICATS personnel in commissioning the site, Sydney Water/Transfield
- Pipehead Complex, Valve Control Upgrade, turnkey project including manufacture of new valve control panel/kiosk, confined space installation works, minor civil works and modifications to the IICATS panel, Sydney Water/Transfield
- Rogan’s Hill Site, Valve Control Upgrade, turnkey project including manufacture of the new IICATS panel, the local valve control panels, the new telecom Distributor and site installation and commissioning, Sydney Water/Transfield
- Helensburgh Pumping Station Upgrade, design, manufacture and installation of new LV starters, Sydney Water/Transfield
- Barrack Point Pump Station Upgrade, design, manufacture and installation of new LV starters, Sydney Water/Transfield
- North Richmond generator connection and ATS construction and installation, Sydney Water/Transfield
- Various Vent Fan Upgrade Projects, Sydney Water/Transfield
- Picton and Green Hills Instrument Panels upgrades design and on-site installation upgrade works, Sydney Water/Transfield Malabar STP, installation works, Sydney Water/Transfield
- Bondi STP, installation works, Sydney Water/Transfield

- Circular Quay SP0016, generator connection panel manufacture and installation works, Sydney Water/Transfield
- Bullaburra, construction of panels and site installation for complete electrical upgrade, Sydney Water/Transfield
- West Pennant Hills Switchboards and VSD Starter Panels, Sydney Water/Transfield
- Castlereagh WPS, Design Engineering, Manufacture of New Kiosk, Generator connection and new Outdoor IICATS panel and installation of all site electrics, Sydney Water/Transfield
- Balmain SPS, Design Engineering, Manufacture of New Kiosk and site installation, Sydney Water/MMA
- French's Forrest Starter Panels, Downer Engineering, Manufacture
- Church Point SPS Kiosk, Downer Engineering, Manufacture
- Carramar ATS, Downer Engineering, Design and Manufacture
- West Pennant Hills WPS Switchboard Design, Sydney Water/Transfield
- Potts Hill WP004 MV to LV Conversion and Generator Connection Design, Sydney Water/Transfield
- Avon Dam Generator to Step up Transformer Design, Sydney Water/Transfield
- Hornsby WP0016 Generator Connection, ATS, and New Main Switchboard Design, Sydney Water/Transfield
- Mt. Riverview, Design of Total Electrical Upgrade and conversion from MV to LV with Generator Connection including, new starters, new distribution board, new IICATS panel, new switchboard and new transformers, Sydney Water/Transfield
- Emu Plains, Design for addition of new 1.2MW 11kV Soft Starter and replacement of existing starter, upgrade to the distribution board, new IICATS panel, transformer repairs and maintenance, Sydney Water/Transfield
- Castlereagh WPS, outdoor kiosk, IICATS Panel and Generator Connection
- Panel electrical design, Sydney Water/Transfield
- Lucas Heights WPS, Electrical Design for the 2 new starters based on soft starters, 2 new starters based on VSD's, harmonic filtering and new IICATS panel, Sydney Water/Transfield
- Engadine WPS, Electrical Design of Pump Starters and combined switchboards, generator connection and IICATS Panel, Sydney Water/Transfield
- Rouse Hill STP Generator Connection design, Sydney Water/Transfield Circular Quay SP0016 Electrical Design for Generator Connection, replacement of existing Main Switchboard, Starter Panels and Distribution Panel, Sydney Water/Transfield
- Malabar electrical design for installation of Gas Burners and Grit Tanks upgrade, Sydney Water/Transfield
- Carramar STP Dual ATS design and manufacture, Sydney Water/Downer Engineering
- Glenfield STP Dual ATS design and manufacture, Sydney Water/Transfield
- Oak Flats SPS Drive upgrade design, manufacture and installation, Sydney Water/Ventia

- Menangle Park LV Design for new pump station, Sydney Water/Comdain
- Palm Beach SPS Valve Panel design, manufacture and installation, Sydney Water/Ventia
- Crown Street, Starter Panels, Main Switchboard and Distribution Board, Sydney Water/Transfield
- Ashfield, Starter Panels, Main Switchboard and Distribution Board, Sydney Water
- Wiley Park, Starter Panels, Main Switchboard and Distribution Board, Sydney Water/Transfield
- Sth Dowling Street, Starter Panels, Main Switchboard, and Distribution Board, Sydney Water/Transfield
- Lucas Heights, Starter Panels and IICATS Panel, Sydney Water/Transfield
- Hornsby, Main Switchboard, ATS, Temporary Switchboard, Sydney Water/Transfield
- Carramar Dual ATS, Sydney Water/Downer Engineering
- Oak Flats Pump Starter, Sydney Water/Ventia
- Cronulla, 2 x Starter Panels, ABB Cabinet Drives adapted to meet Sydney Water specifications, Sydney Water/RCR
- Potts Hill WP004, turnkey project where Itech did the design, construction of the panels, installation, minor civil works and engineering documentation and drawings for the site including Electrical Drawings, P&ID's, Civil Drawings, Sydney Water/Transfield
- Pyrmont, turnkey project where Itech manufactured the new kiosk, installed the new electrical system and assisted SWC IICATS personnel in commissioning the site, Sydney Water/Transfield
- Temporary Bypass panels Design and Construct
- Marrickville DP0001, dewatering plant electrical upgrade, installation services, MMA Civil/John Holland/Laing O'Rourke/Sydney Water

Sydney Water D4C



- Design of electrical upgrade to Helensburgh SPS
- Design of electrical upgrade to Bonnet Bay SPS
- Design of electrical upgrade to Marrickville DP
- Design of electrical upgrade for Kurnell SPS
- Design of HV Switchroom Lighting for Malabar STP
- Design of electrical upgrade for Dapto SPS
- Design of new electrical power and control for Yallah Mount Marshall SPS
- Design of earthing for Malabar STP
- Design Management for the power studies for Como, Sylvania and Caringbah SPS's
- Design of Lighting for Malabar STP HV Switchroom
- Design of Lighting for Malabar STP Cogen Area

Wingecarribee Shire Council



- Wingecarribee Water Pumping Station upgrade, 3 new motors and motor starter panels, new PLC upgrade, design, manufacture, software, installation and commissioning, Wingecarribee Shire Council
- Bundanoon Water Pumping Station upgrade, 3 new motors and motor starter panels, new PLC upgrade, design, manufacture, software, installation and commissioning, Wingecarribee Shire council

Eurobodalla Shire Council



- Tomakin and Rosedale pump stations, electrical upgrade manufacturing and installation services, Precision Civil/Public Works/Eurobodalla Shire Council
- Broulee pump station, electrical engineering, manufacturing and site installation, MMA Civil/Eurobodalla Shire Council
- Tuross Heads treatment plant electrical and instrumentation, detailed design and manufacturing of MCC's, site installation services. Comdain/Eurobodalla Shire Council

City of Sydney



Cloud based control and monitoring system, IoT, the 'WALTRS' system, providing visualisation and control for over 50 nodes across the city covering the water pumping stations, water features and park lighting controlled by the City of Sydney. The system is virtualised and all data is accessible from any authorised web browser device such as a PC, tablet or smart phone. This was Itech's first IoT project and Itech partnered with Pervasive Telemetry, an Australian technology company who developed the IoT agent we used in the system. o Support Contract for the WALTRS system

Comdain



- Mascot, Turnkey project, Odour Control System Upgrade, Comdain/Sydney Water
- West Pennant Hills electrical upgrade LV conversion, Design and Construct, new switchboard, new LVSPs, IICATS, Vent Fan Panels, site installation and commissioning, Comdain/Sydney Water
- Promac Cecil Hills WPS, electrical panel design, manufacture and LV Installation for new pump station, Comdain/Sydney Water

Downer Engineering



- Prospect WPS PRV Panels manufacture, Downer Engineering/Sydney Water
- Promac Harrington Park, electrical panel design, manufacture and LV installation for the new pump station, Downer Engineering/Sydney Water
- Promac Prospect, electrical panel design, manufacture and LV installation for the new pump station, Downer Engineering/Sydney Water

Precision Civil Infrastructure



- Pump Station C for Hawkesbury City Council, design , manufacture and installation of pump station electrics
- Tomakin and Rosedale pump station upgrades
- Cobar Sewerage Scheme electrical design works
- Alstonville WWTP SCADA and electrical engineering upgrade works
- Orange STP inlet works electrical engineering works
- Pacific Pines Electrical Engineering works including electrical switchboard



Office: 24/27-31 Wentworth Street
Greenacre, NSW, 2190

Factory: 26/27-31 Wentworth Street
Greenacre, NSW, 2190

Phone: Angelo Hasouros 0400 813 742
Nick Fondas 0421 685 895
Paul French 0411 601 056

Web: www.itechcorp.com.au

eMail: sales@itechcorp.com.au

